



*mimosa*<sup>®</sup>

# Introduction to Mimosa

Cecil Cheong,

Director, Channel Sales Asia

# Mimosa at-a-Glance

## Company Introduction

- Worldwide Leader in Fixed Wireless Access Solutions
- Headquartered in Santa Clara, California
- Development Centers at California, Bangalore and Istanbul Global Manufacturing Capabilities in MY, India

## Worldwide Deployments

- 1+ Million Devices Deployed Worldwide
- Carrier-grade Solutions in Over 160 Countries

## Market Differentiators

- Part of Reliance Industries having market cap of \$238.11B\*
- Fixed Wireless Access delivers fiber-fast broadband connectivity
- Price/Performance far superior to copper, fiber, and other wireless technologies

*\*Numbers as of May 2024*

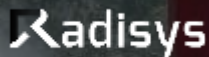


2012

Founded in Silicon Valley

Acquired by Radisys Corporation, a Wholly Owned Subsidiary of Jio Platforms Limited

2023





## *Fixed Wireless Access (FWA)*

*Mimosa enables internet connectivity using wireless network technology to connect fixed locations, such as homes or businesses, to the internet using unlicensed and licensed spectrum.*



# Mimosa Offers Superior PTP and PTMP Products Featuring Unlicensed Spectrum Technology

Multi-Gigabit Backhaul for 5G and Fixed Wireless Access as low as 1/3 the cost of competing technologies



**Disruptive price/performance** Mimosa proprietary software on cost-effective Wi-Fi silicon



Delivering Fibre-like speed with up to 6Gbps of usable throughput per sector using PTMP products with **8x8 MIMO and 160 MHz** technology



Achieves speeds up to **3.4 Gbps** in a PTP link



**Low-cost unlicensed spectrum** in 5/6 GHz extremely efficient in rural areas and **mmWave spectrum (n257/n258)** for **Dense Urban deployment**



Large scale adoption by **Tier-1 Service Providers and Carriers**



Deployment flexibility and interference immunity through **Mimosa Engineered Antennas**

# Advanced Technology Unleashed



**MU-MIMO**  
Massive Capacity



**TDMA**  
High Reliability &  
Increased Stability



**SYNC with ACS**  
Auto Channel  
Selection with Sync



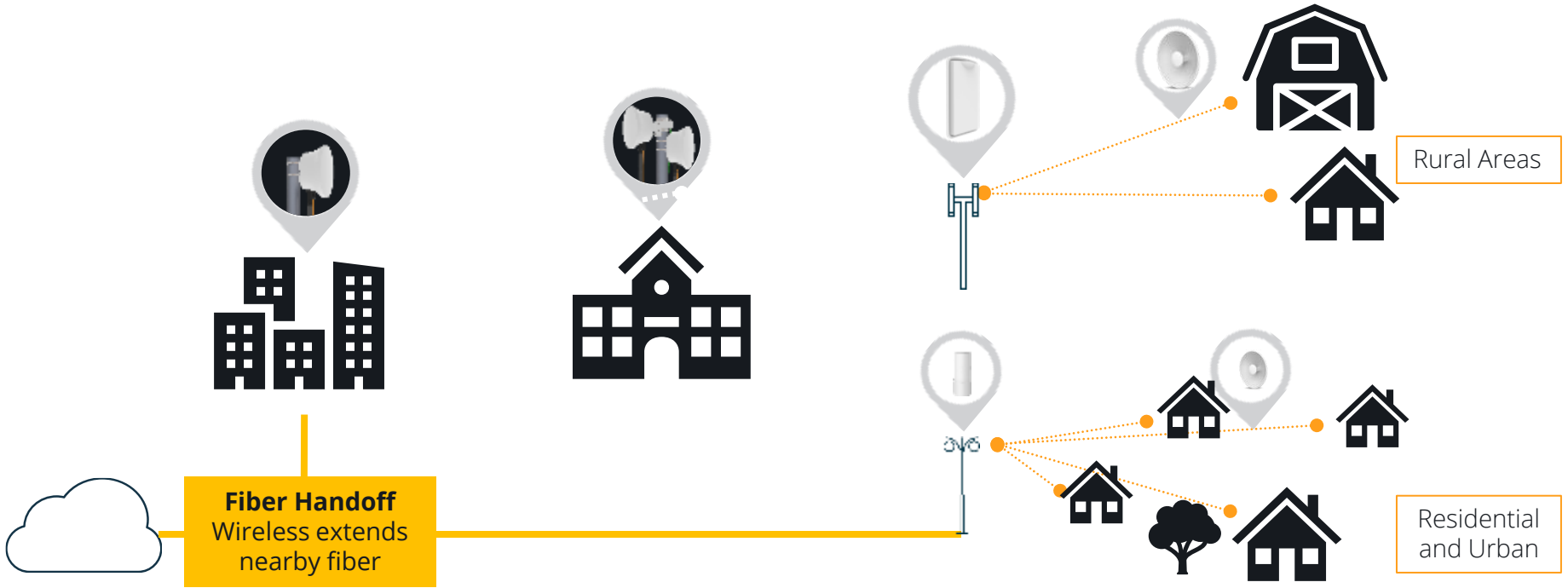
**CLOUD**  
Network  
Orchestration





# Mimosa Product Portfolio for Point-to-Point (PTP) and Point-to-Multipoint Solutions (PTMP)

# Fixed Wireless PTP & PTMP Applications



# Point-to-Point Backhaul Solutions

## Advanced Performance

Offering up to 3.4 Gbps, 6Ghz, with high noise immunity

## High-Reliability

Reliable throughput (750 Mbps-3.4 Gbps), GPS Sync, IP67 rated

## Cost-Effective Options

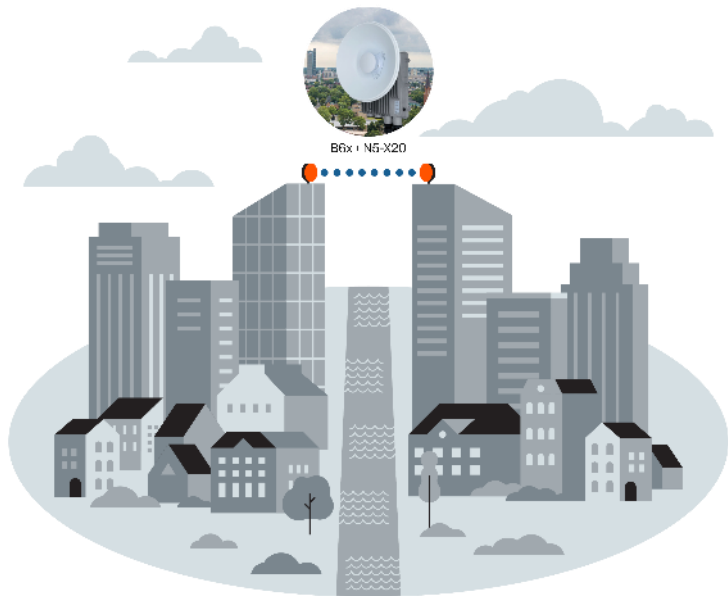
Low-cost unlicensed 5/6 GHz spectrum, highly efficient in rural areas.

## Flexible Coverage

Supports short and long-range (3-50+ km) with various and extended frequencies

## Ease of Deployment

Simple & automated configuration with cloud management



## Point-to-Point



### B24

Integrated PTP, 24.00-24.25GHz, 3 km; 1.5Gbps



### B26

PTP, 26.5-27.5 GHz\* (n257/n258)\*\* 3 Gbps per 320MHz



### B6x

Modular PTP, 5.15-6.4GHz 15+ km ; +3 Gbps



### C6x

Modular PTP BH, 5.1-6.4GHz 1.8+Gbps



### B5x

Modular PTP, 4.9-6.4 GHz 15+ km; 1.5Gbps



### C5x

Modular PTP BH, 4.9-6.4GHz 12+ km ; 750 Mbps



### B11

Licensed 10.0 – 11.7 GHz 100 km; 1.5Gbps

\* POC Q1'25/\*\* Roadmap



# Point-to-Multipoint Fixed Wireless Solutions

Extended Frequency  
4.9-6.4 Ghz

Access Points  
Speeds up to 6 Gbps

Subscriber Speeds  
Up to 1.725 Gbps

Ultra Rugged  
IP67 Rated

Ease of Deployment  
Simple & automated configuration

Future-Proof  
Robust & Scalable Cloud Management



## Point-to-Multipoint



**A6**  
8x8 Sector  
5.15-6.4GHz, 6 Gbps (IP)



**A5x**  
Connectorized PTMP Access Point  
4.9-6.2GHz, 20+ km; 750 Gbps



**A5c**  
Connectorized PTMP Access Point  
4.9-6.2GHz, 20+ km; 1Gbps



**C6x**  
Modular PTMP Client  
5.15-6.4GHz, 12+ km; 1.75 Gbps



**C5x**  
Modular PTMP Client  
4.9-6.4GHz, 12+ km; 750 Mbps



**C6\***  
Integrated 4x4 antenna PTMP NLOS Client, 5.1-6.4GHz, 1.750 Gbps

\* POC Q4'24

# N5-X Modular, Twist-On Antennas for "X-Series" Radios (8-30 dBi)





# Mimosa Management Platform

# MMP - Mimosa Management Platform

Comprehensive Management System for Mimosa products

Virtualized solution for cloud or private hosting

- Localize data storage for privacy, and enables ISP dedicated server resources for optimizing large scale management functions
- Dockerized installation for Linux/Ubuntu/RedHat

Expands Mimosa Cloud with upcoming premium features

- Enterprise user auth expanded role management, northbound API, expanded reporting, advanced alerts/alarm

Mimosa Cloud NMS remains an option for lightweight monitoring features

